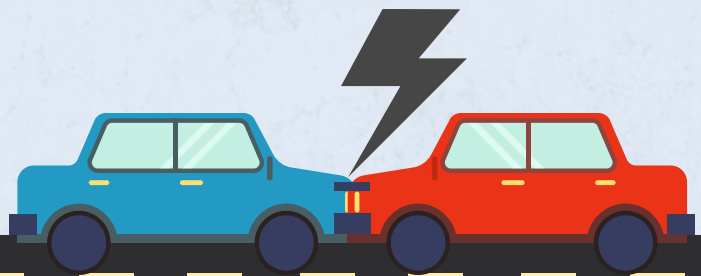


Comprehension Coverage VS Collision Coverage



Collision Coverage Covers Damage To Vehicle From:

- Collision with another vehicle
- Collision with an object
- Single car rollover accidents



Comprehension Coverage Covers Non-Collision Damage To Vehicle Caused From:

- Theft & animal damage
- Falling objects & fire
- Natural disasters



Points Of Similarity

- Damage to other person's vehicle and medical bills are not covered.
- Maximum coverage limit is up to actual cash value of the vehicle.
- Coverage involves deductible.



www.shawncampinsurance.com
Shawn Camp Insurance Agency, Inc.
2705 E. Stan Schlueter Loop,
Suite 101,
Killeen, TX - 76542
Phone: (254) 526 - 0535

Image Source: Designed by Freepik